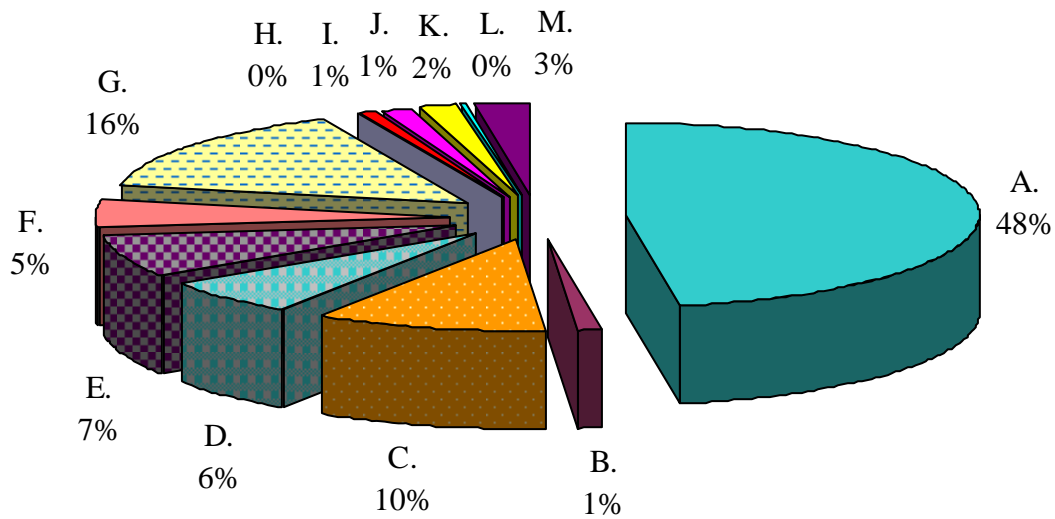


# Where the Money Goes...

Budget Facts 2010-2011



<b>A. Instruction .....</b>	<b>\$60,545,070</b>
<b>B. Health Services .....</b>	<b>1,523,800</b>
<b>C. Support Services* .....</b>	<b>13,244,546</b>
<b>D. Administration .....</b>	<b>8,227,914</b>
<b>E. Oper./Maintenance .....</b>	<b>9,499,177</b>
<b>F. Transportation .....</b>	<b>6,466,777</b>
<b>G. Employee Benefits .....</b>	<b>19,335,262</b>
<b>H. Food Service .....</b>	<b>0</b>
<b>I. Capital Outlay .....</b>	<b>1,253,732</b>
<b>J. Special Schools .....</b>	<b>1,726,267</b>
<b>K. State/Federal Programs .....</b>	<b>2,171,765</b>
<b>L. Transfer to Charter .....</b>	<b>248,491</b>
<b>M. Debt Service .....</b>	<b>3,223,042</b>
<b>TOTAL</b>	<b>\$127,465,843</b>

\* C. Support Services includes: related and extraordinary services, guidance, CST, Media, professional development